

## Series 39-8

### SURFACE MOUNT / SOLID-STATE MINIATURE

The unique approach to SS/SMT switching allows the customer to process a Hall-effect chip and LED (optional) to their board. Then simply snap the ITW Switches Series 39-8 actuator in place. This can be done manually or robotically completing a totally process compatible switching system.

### APPLICATIONS

- Control panel assemblies
- Recording equipment
- Datacom switching systems
- Telecom switching systems
- Scientific instrumentation
- Computers

### KEY FEATURES:

- Solid-State (Hall-effect) switching
- No mechanical contacts
- Momentary or maintained action
- Lighted (Surface Mount LED) or non-lighted
- Key caps available
- Lower overall installed cost
- RoHS process compatibility



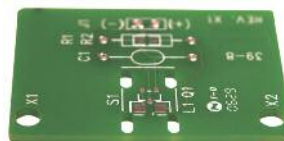
ACTUAL SIZE

### ORDERING INFORMATION:

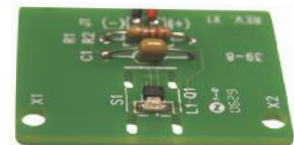
#### Switches

Part Number	Action	Polarity
39-82N	Momentary	North
39-82S	Momentary	South
39-83N	Maintained	North
39-83S	Maintained	South

①—Customer Designed PCB



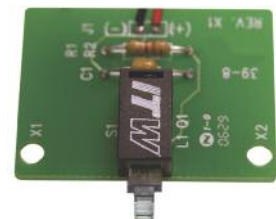
②—Customer Loaded PCB



③—ITW Series 39-8 SS/SMT Pushbutton Switch



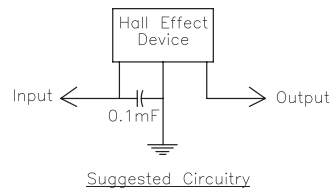
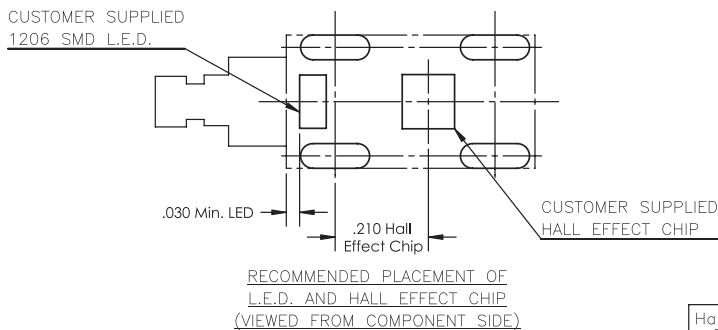
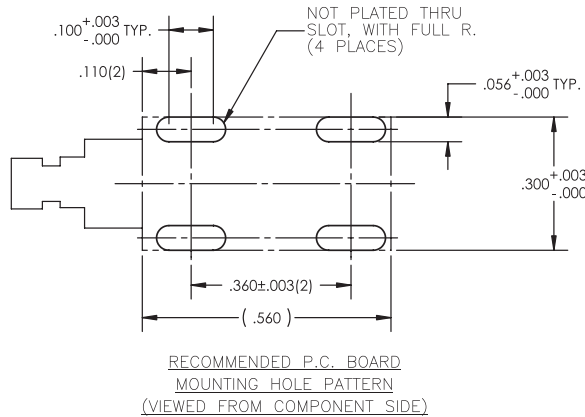
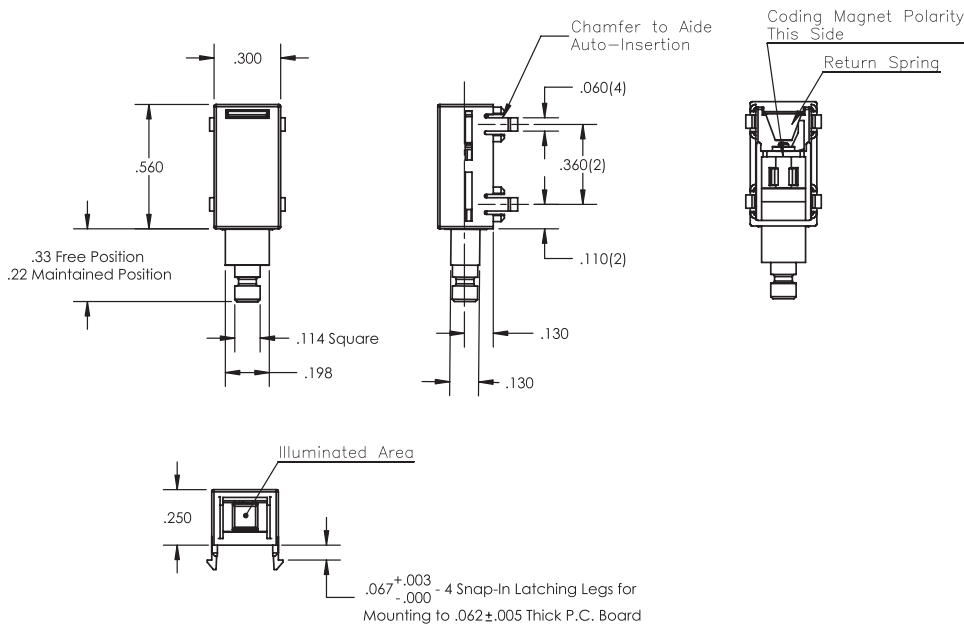
④—Complete Assembly



### STANDARDS / AGENCY / RATINGS:



## 39-8XX



## MECHANICAL / ELECTRICAL CHARACTERISTICS:

### Action:

SPST-NO

### Button travel:

3.05 mm (0.13 in) nominal

### Operating Force:

113 grams nominal

### Electrical life:

Momentary: 1 million cycles

Maintained: 25,000 cycles

### Electrical rating:

5VDC, 5mA typical

(when used with

Allegro Hall Effect

P/N A3280ELHLT,

customer supplied)