

type 62 and 63

Sealed switches

Description

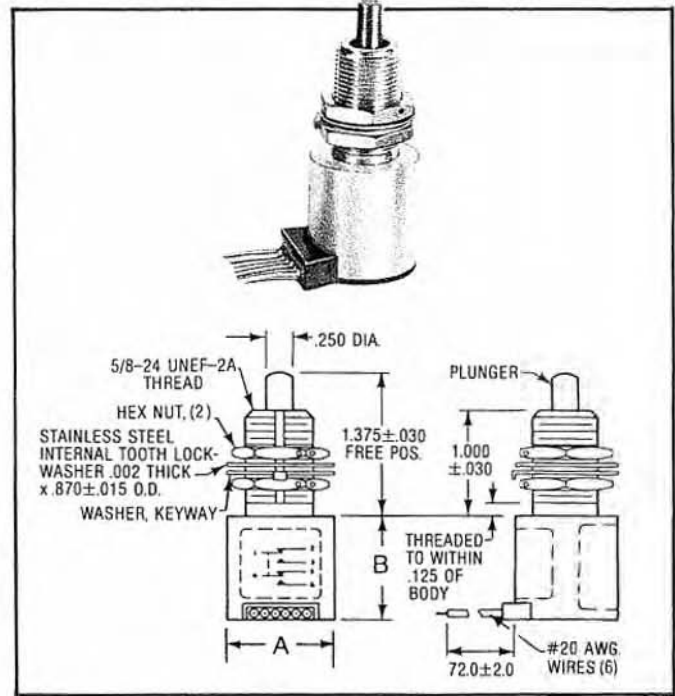
The Licon Type 63 Series is an environment-free sealed switch designed for rugged duty and to conform to the rigid specifications of military and standard designs.

A one piece housing with "O" ring seals at the plunger and epoxy at terminal base provides the true environment free sealing to comply with immersion requirements of MIL-S-8805 Design Symbol #3 and #4.

The Type 63 Series may be used in ambient temperature ranges of -65°F to $+185^{\circ}\text{F}$ or as noted on our product specifications. For higher temperature requirements, contact the factory.

The Type 63 Series is bushing mounted. Two corrosion resistant hex nuts, one keyway washer, and one internal tooth lockwasher are furnished with each switch to provide positive non-turn mounting. Roller plunger models have a field adjustable roller orientation and have a positive locking nut in addition to the standard hardware.

The Type 63 Series is available with side or bottom receptacles, wire leads with receptacle or plug connectors or wire leads with stripped and tinned ends. The wire leads can be marked with circuit identification or color coded. Most wire leads are per MIL-W-22759/7, however other wire options are available.



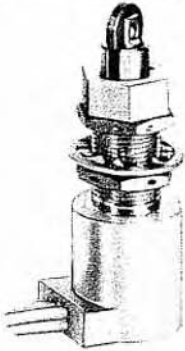
ORDERING GUIDE AND OPERATING CHARACTERISTICS

								Current Capacity @ 28 VDC Sea Level to 50,000 Ft.					
Circuitry	Operating Force	Full Over Travel Force	Release Force	Pre-Travel	Diff. Travel	Over Travel	Weight with Leads	Resistive	Inductive	Motor	Dim. A	Dim. B	Part No.
2-SPDT	9 ± 3 lbs.	30 lbs. max.	4 lbs. min.	.070 max.	.020 max.	.250 min.	.46 lbs. max.	4 amp	2 amp	4 amp	1.015 max.	.980 max.	63-210021 (MS24331-1) MIL-S-8805/40
DPDT-DB	9 ± 3 lbs.	30 lbs. max.	5 lbs. min.	.070 max.	.045 max.	.250 min.	.84 max.	15 amp	10 amp	5 amp	1.515 max.	1.700 max.	63-210026 (MS24331-4) MIL-S-8805/40
SPDT-DB	9 ± 3 lbs.	30 lbs. max.	5 lbs. min.	.070 max.	.035 max.	.250 min.	.62 lbs. max.	15 amp	10 amp	5 amp	1.515 max.	1.310 max.	63-210028 (MS24331-3) MIL-S-8805/40
2-SPDT	9 ± 3 lbs.	30 lbs. max.	5 lbs. min.	.070 max.	.035 max.	.250 min.	.77 lbs. max.	10 amp	3 amp	6 amp	1.515 max.	1.500	63-210029 (MS24331-2) MIL-S-8805/40
2-SPDT	9 ± 3 lbs.	30 lbs. max.	4 lbs. min.	.040 max.	.020 max.	.250 min.	.45 lbs. max.	7 amp	2.5 amp	4 amp	.720 max.	.980 max.	63-210050 (MS21321-1) MIL-S-8805/39
4-SPDT	9 ± 3 lbs.	30 lbs. max.	4 lbs. min.	.040 max.	.020 max.	.250 min.	.80 lbs. max.	7 amp	2.5 amp	4 amp	1.031 max.	1.200 max.	63-210055 (MS21321-2) MIL-S-8805/39
2-SPDT	9 ± 3 lbs.	30 lbs. max.	5 lbs. min.	.070 max.	.035 max.	.250 min.	.60 max.	10 amp	4 amp	6 amp	1.030 max.	1.10 max.	63-210176 M8805/100-002 MIL-S-8805/100
4-SPDT	9 ± 3 lbs.	30 lbs. max.	5 lbs. min.	.070 max.	.035 max.	.250 min.	.80 lbs. max.	7 amp	2 amp	4 amp	1.030 max.	1.10 max.	63-210178 M8805/100-007 MIL-S-8805/100
4-SPDT	9 ± 3 lbs.	30 lbs. max.	4 lbs. min.	.040 max.	.020 max.	.250 min.	.85 lbs. max.	7 amp	2.5 amp	4 amp	1.031 max.	1.200 max.	63-210098** (MS27240-2) MIL-S-8805/43
2-SPDT	9 ± 3 lbs.	30 lbs. max.	4 lbs. min.	.040 max.	.020 max.	.250 min.	.50 lbs. max.	7 amp	2.5 amp	4 amp	.720 max.	1.0 max.	63-210099** (MS27240-1) MIL-S-8805/43

**15/32—32. UNS—2A Bushing—length .625 ± .030—F.P. .875 ± .030. See Military Spec. or contact factory for additional information.

ROLLER PLUNGER ACTUATOR

For cam and slide actuation with less than 20° rise. Roller guide azimuth adjusts angularly in 45° increments.

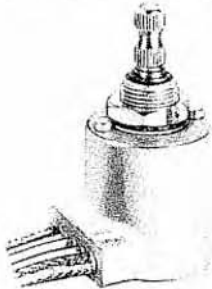


Military Parts No.	Military Spec. and Slash No.	Licon Part No.
MS27240-3	MIL-S-8805/43	63-710037
MS27240-4	MIL-S-8805/43	63-710038
M8805/100-005	MIL-S-8805/100	63-710086
M8805/100-006	MIL-S-8805/100	63-710087
M8805/100-009	MIL-S-8805/100	63-710088
M8805/100-010	MIL-S-8805/100	63-710089

See Military Spec. or contact factory for additional information.

ROTARY ACTUATOR

For cam and slide applications, switch can be used with external roller lever or straight lever actuators.

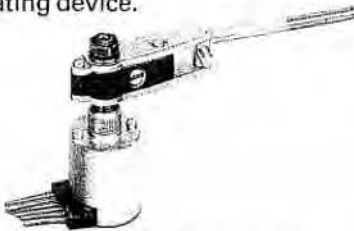


Military Part No.	Military Spec. and Slash No.	Licon Part No.
M8805/85-001	MIL-S-8805/85	63-510031
M8805/85-002	MIL-S-8805/85	63-510058

See Military Spec. or contact factory for additional information.

ROTARY LINKAGE—LEVER ACTUATOR (NON-SPRING RETURN)

Meets MS-24420 specifications. There is no spring return in actuator and travel is controlled in both directions by the user's actuating device.



Military Part No.	Military Spec. and Slash NO.	Licon Part No.
MS24420-1	MIL-S-8805/49	63-510015
MS24420-2	MIL-S-8805/49	63-510016
MS24420-3	MIL-S-8805/49	63-510017
MS24420-4	MIL-S-8805/49	63-510018
MS24420-5	MIL-S-8805/49	63-510052

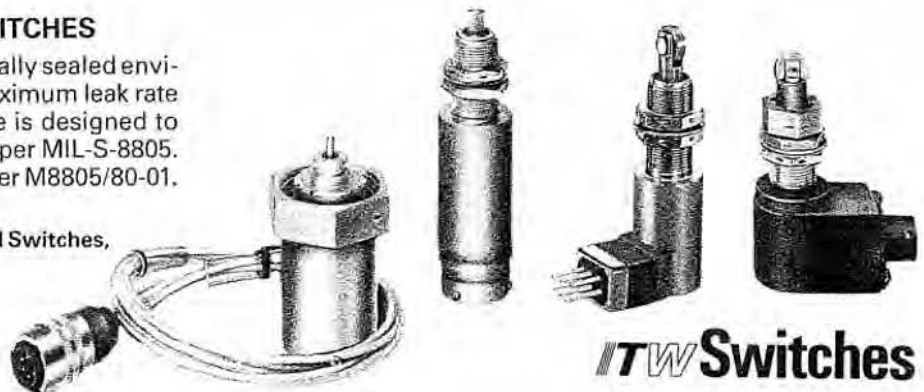
See Military Spec. or contact factory for additional information.

For Special Applications or Requirements—
Consult Factory.

TYPE 62 HERMETICALLY SEALED SWITCHES

The Licon Type 62 Series is a true hermetically sealed environment-free snap-action switch with a maximum leak rate of 1×10^{-8} C.C./Sec. This switch enclosure is designed to meet the sealing requirements as defined per MIL-S-8805. Hermetic, design style 5. Ref.: 62-200021 per M8805/80-01.

For information on Type 62 Hermetically Sealed Switches,
contact the factory.



ITW Switches